



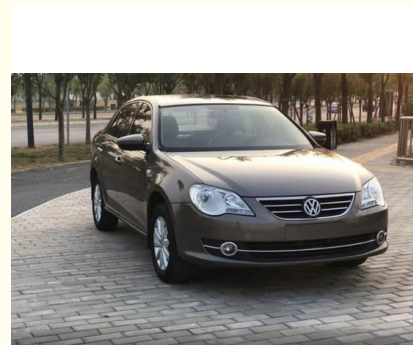
Bora 2011 1.6L Manual Comfort FAW-Volkswagen Compact Car Gasoline 1.6L 105HP L4 5-speed Manual

Our Product Introduction

for more products please visit us on petrolhybridcars.com

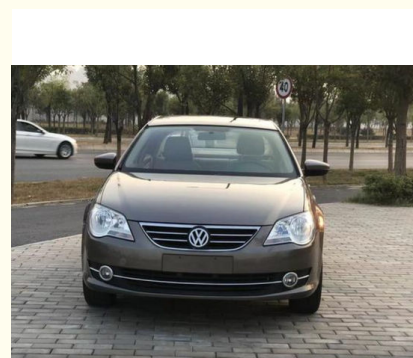
Basic Information

- Place of Origin: China
- Brand Name: Bora 2011
- Model Number: Bora 2011
- Minimum Order Quantity: discussible
- Delivery Time: 5-8 word days
- Payment Terms: T/T

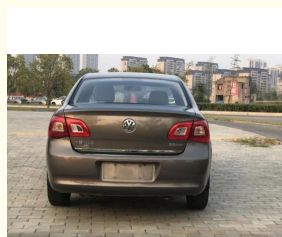
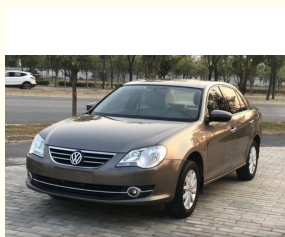


Product Specification

- Energy Type: Gas
- Maximum Power: 77(105Ps)
- Length * Width * Height: 4540x1775x1467
- Product Category: Sedan
- Body Structure: 4 Door 5 Seat Sedan
- Drive Model: Front Front Drive
- Highlight: **5-speed Manual FAW-Volkswagen Compact Car, 1.6L Manual FAW-Volkswagen Compact Car, Bora 2011 1.6L FAW-Volkswagen**



More Images



Product Description

Product Description:

Used Bora

I am offering my well-maintained Volkswagen Bora, a perfect combination of German engineering, stylish design, and efficient performance. This sedan is ideal for anyone seeking a dependable vehicle that delivers both comfort and power on the road.

The Bora is known for its impressive fuel economy, making it a great choice for both city driving and long trips.

Equipped with advanced safety features such as airbags, ABS, and stability control, ensuring peace of mind for you and your passengers.

This Volkswagen Bora has been carefully maintained, with all services up to date. The car has never been involved in any major accidents and comes with a clean title. Its reliability, coupled with a well-crafted interior and exterior, makes it an excellent value for anyone in the market for a used sedan.

Whether you're looking for a daily driver or a vehicle for weekend getaways, the Bora is versatile enough to meet your needs. Don't miss out on this opportunity to own a quality car at an affordable price.

If you're interested or have any questions, please feel free to contact me. I'm happy to provide more details or arrange a test drive at your convenience.





Features:

- Product Name: Used Bora
- Safety:
 - Comprehensive safety airbag system for passenger protection
 - Advanced safety technologies including ABS (Anti-lock Braking System), Electronic Stability Control, etc., for stable driving and braking performance
 - Reverse camera and parking assistance system for convenient parking operations

Technical Parameters:

Maximum Speed :	185
Length * Width * Height :	4540x1775x1467
Engine	L4

Energy Type:	gas
Body Structure:	4 Door 5 Seat Sedan
Maximum Torque:	155
Powertrain:	gas
Exterior Design:	The interior design is exquisite and practical, using high-quality materials and comfortable to the touch. The seats are ergonomic and provide excellent support and ride comfort. The interior is richly equipped with features such as a large center screen and an intelligent connectivity system to make your drive more convenient and enjoyable.
Product Name:	Bora

Applications:

The stylish and dynamic appearance and smooth lines outline a charming figure, making you the focus of the street.

The interior space is spacious and comfortable, flexible and changeable to meet your diverse needs.

Efficient power, economical and fuel-efficient, saving costs for your travel.

Rich and practical configurations, enjoy a convenient driving experience.

Excellent safety performance, escorting every trip for you.

Support and Services:

- 24/7 technical support hotline for any questions or concerns
- On-site technical support for major issues
- Regular software updates to improve performance and add new features
- Access to Toyota's network of certified service centers for maintenance and repairs
- Warranty coverage for the vehicle and battery

Our technical support and services team is dedicated to providing prompt and effective solutions to any issues that customers may encounter. We strive to make sure that our customers have a worry-free ownership experience with their Car.

Packing and Shipping:

Product Packaging:

Used Bora

Warranty Information

User Manual

Shipping Information:

Product will be shipped within 5-7 business days of order confirmation.

Shipping fees will be calculated during checkout.

Shipping available to most locations worldwide.

Tracking information will be provided once the product has been shipped.

FAQ:

Q: What is the brand name of the car?

A: The brand name is Bora .

Q: Where is the full electric car manufactured?

A: The car is manufactured in China.

Q: What is the minimum order quantity for the full electric car?

A: The minimum order quantity is discussible. Please contact us for more information.

Q: What are the payment terms for the full electric car?

A: The payment terms are T/T.

Q: What is the delivery time for the full electric car?

A: The delivery time is 5-8 word days.



Shaanxi Xianghelixin Automobile Sales Service Co., Ltd.



18702965875



xunqin419@gmail.com



petrolhybridcars.com

Room 2307, Shanxi Securities Building, No.2 Gaoxin Road, Lianhu District, Xi 'an City, Shaanxi Province