



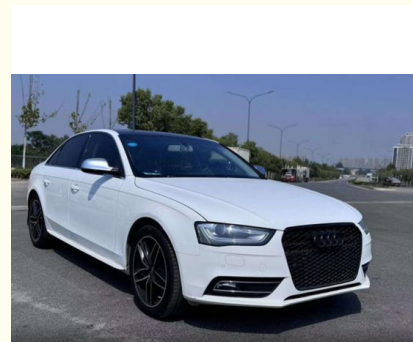
Audi A4L 2015 35 TFSI Automatic Standard Midsize Car Gasoline 2.0T 180HP L4 CVT Continuously Variable Transmission

Our Product Introduction

for more products please visit us on petrolhybridcars.com

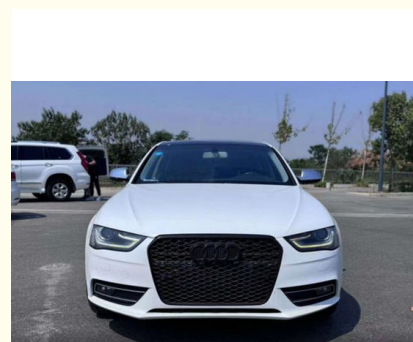
Basic Information

- Place of Origin: China
- Brand Name: Audi A4L
- Model Number: Audi A4L
- Minimum Order Quantity: discussible
- Delivery Time: 5-8 word days
- Payment Terms: T/T

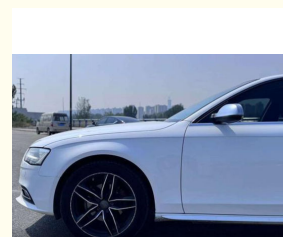
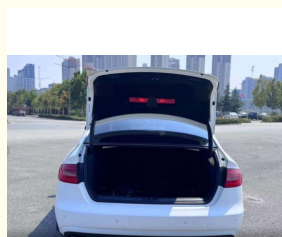
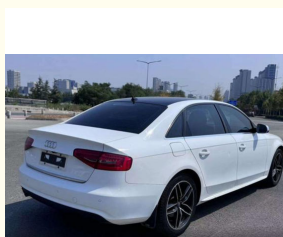
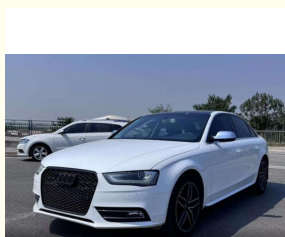


Product Specification

- Energy Type: Gas
- Maximum Power: 140(190Ps)
- Length * Width * Height: 4858x1847x1439
- Product Category: Sedan
- Body Structure: 4 Door 5 Seat Sedan
- Drive Model: Front Front Drive
- Highlight: 2015 Audi A4L Midsize Car 2.0T,
35 TFSI Audi A4L Midsize Car,
2.0T 180HP Gasoline Audi A4L



More Images



Product Description

Product Description:

Used Audi A4L

Are you looking for a car that perfectly blends luxury, performance, and cutting-edge technology? Look no further than this 2021 Audi A4L. This meticulously maintained vehicle is in excellent condition and ready to provide you with an exceptional driving experience.

Under the hood, the Audi A4L boasts a powerful 2.0L turbocharged engine paired with a smooth 7-speed S tronic transmission. This combination delivers an impressive balance of power and fuel efficiency, making it perfect for both city driving and long highway cruises. With quattro all-wheel drive, you'll experience superior handling and control in any weather condition.

Step inside to discover a cabin designed with both comfort and style in mind. The A4L's spacious interior features premium leather seats, a panoramic sunroof, and ambient lighting. The advanced MMI® infotainment system comes with a large touchscreen display, Apple CarPlay, Android Auto, and a Bang & Olufsen sound system for an immersive audio experience.

Safety is a top priority in the Audi A4L. This model is equipped with a suite of advanced safety features, including adaptive cruise control, lane departure warning, parking assist, and a 360-degree camera system. Drive with peace of mind knowing that you and your passengers are well-protected.

- Low mileage: Only 20,000 km
- Clean title, no accidents
- Regularly serviced by Audi-certified technicians
- Comes with original manuals and two sets of keys

Don't miss out on the chance to own this exceptional Audi A4L. Contact me today to schedule a test drive or for more information!





Features:

Product Name: Used Jaguar XJ

Safety:

Comprehensive safety airbag system for passenger protection

Advanced safety technologies including ABS (Anti-lock Braking System), Electronic Stability Control, etc., for stable driving and braking performance

Reverse camera and parking assistance system for convenient parking operations

Technical Parameters:

| | |
|---------------------------|---|
| Maximum Speed : | 230 |
| Length * Width * Height : | 4858x1847x1439 |
| Engine | L4 |
| Energy Type: | gas |
| Body Structure: | 4 Door 5 Seat sedan |
| | |
| Maximum Torque: | 320 |
| Power train: | gas |
| Exterior Design: | The interior design is exquisite and practical, using high-quality materials and comfortable to the touch. The seats are ergonomic and provide excellent support and ride comfort. The interior is richly equipped with features such as a large center screen and an intelligent connectivity system to make your drive more convenient and enjoyable. |

| | |
|---------------|----------|
| Product Name: | Audi A4L |
|---------------|----------|

Applications:

The stylish and dynamic appearance and smooth lines outline a charming figure, making you the focus of the street.

The interior space is spacious and comfortable, flexible and changeable to meet your diverse needs.

Efficient power, economical and fuel-efficient, saving costs for your travel.

Rich and practical configurations, enjoy a convenient driving experience.

Excellent safety performance, escorting every trip for you.

Support and Services:

- 24/7 technical support hotline for any questions or concerns
- On-site technical support for major issues
- Regular software updates to improve performance and add new features
- Access to Toyota's network of certified service centers for maintenance and repairs
- Warranty coverage for the vehicle and battery

Our technical support and services team is dedicated to providing prompt and effective solutions to any issues that customers may encounter. We strive to make sure that our customers have a worry-free ownership experience with their Car.

Packing and Shipping:

Product Packaging:

Used Audi A4L

Warranty Information

User Manual

Shipping Information:

Product will be shipped within 5-7 business days of order confirmation.

Shipping fees will be calculated during checkout.

Shipping available to most locations worldwide.

Tracking information will be provided once the product has been shipped.

FAQ:

Q: What is the brand name of the car?

A: The brand name is Audi A4L.

Q: Where is the full electric car manufactured?

A: The car is manufactured in China.

Q: What is the minimum order quantity for the full electric car?

A: The minimum order quantity is discussible. Please contact us for more information.

Q: What are the payment terms for the full electric car?

A: The payment terms are T/T.

Q: What is the delivery time for the full electric car?

A: The delivery time is 5-8 word days.



Shaanxi Xianghelixin Automobile Sales Service Co., Ltd.



18702965875



xunqin419@gmail.com



petrolhybridcars.com

Room 2307, Shanxi Securities Building, No.2 Gaoxin Road, Lianhu District, Xi 'an City, Shaanxi Province